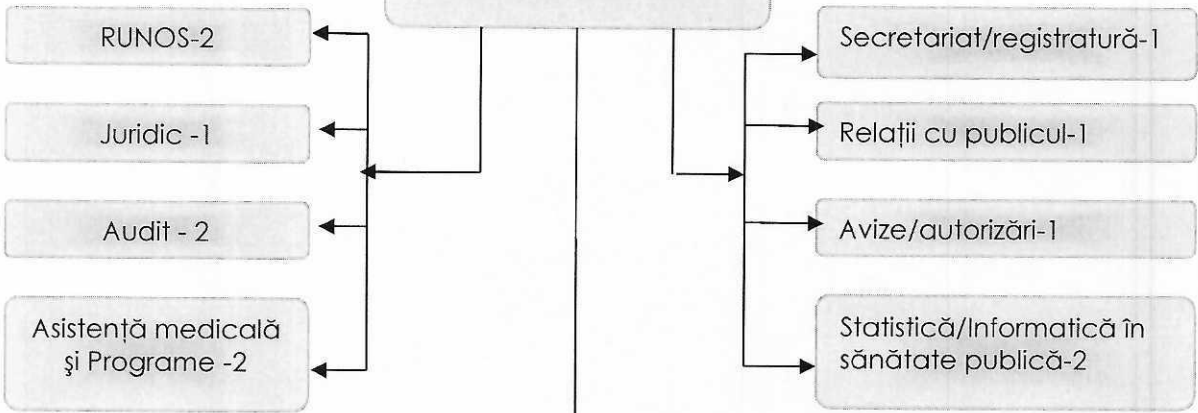


Sediul Constantin Dobrogeanu Ghirec
2bis

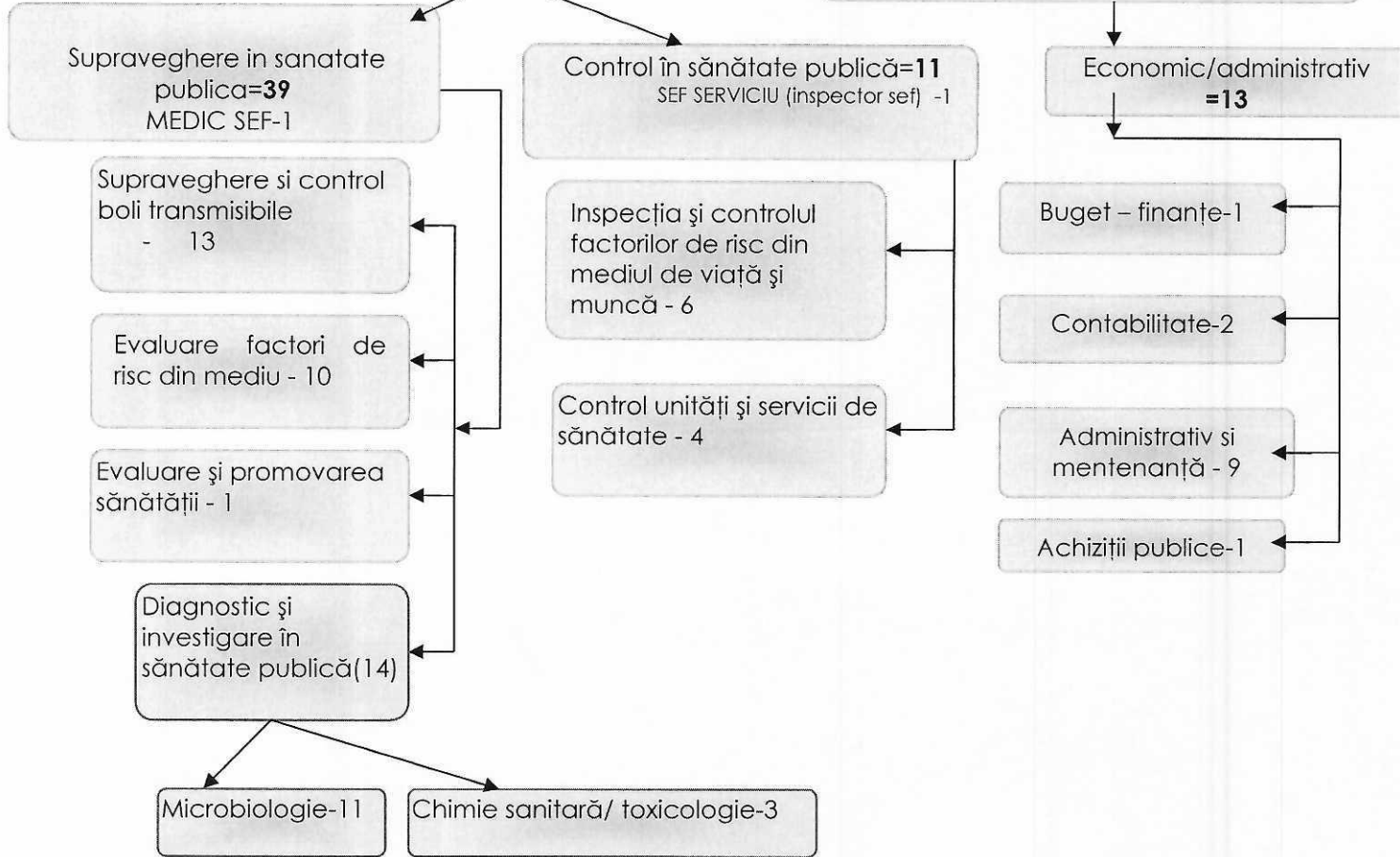
Sediul Grădii Publice, nr.2

D.S.P. BRAILA
DIRECTOR EXECUTIV- 1



**DIRECTOR EXECUTIV
ADJUNCT SĂNĂTATE PUBLICĂ-1**

**DIRECTOR EXECUTIV ADJUNCT
ECONOMIC-1**



DIRECTOR EXECUTIV,